

FOR YOUR EYES ONLY



OCEAN
INDEPENDENCE

FOR YOUR EYES ONLY FOR CHARTER

specifications

LENGTH 31.5M / 103'2"

BEAM 6.80M / 22'4"

DRAUGHT 3.10M / 10'2"

BUILDER ASTONDOA

BUILT 2004 (2021)

CRUISING SPEED 12.0 KNOTS

MAXIMUM SPEED 17.0 KNOTS

FUEL CONSUMPTION 275 L/HR

accommodation

CRUISING / OVERNIGHT GUESTS 30 / 10

NUMBER OF STATEROOMS 4 (2 DOUBLE, 1 TWIN, 2 SINGLE, 2 PULLMAN)

NUMBER OF CREW 9

facilities & features

TENDERS & TOYS

6.4M EYE CANDY - TAKES 10 GUESTS AND 2 CREW

2 X PADDLE BORDS

1 X YAMAHA SEA SCOOTER

1 X 2 MAN SEA DOO - NEW 2024

BEACH CLUB SEA POOL - NEW 2024

INFLATABLE SLIDE - NEW 2024

INFLATABLE TOYS

SNORKELING GEAR

ECOBIOBALL GOLF BALL DRIVING (US\$10 PER BALL)

BOW GARAGE FOR CRANE AND TENDER

OTHER FEATURES

FULL TIME MASSEUSE ON BOARD FOR MASSAGE & FACIALS.

INCLUDED IN THE RATE

BOW GARAGE FOR CRANE AND TENDER

BEACH PICNIC SET UP



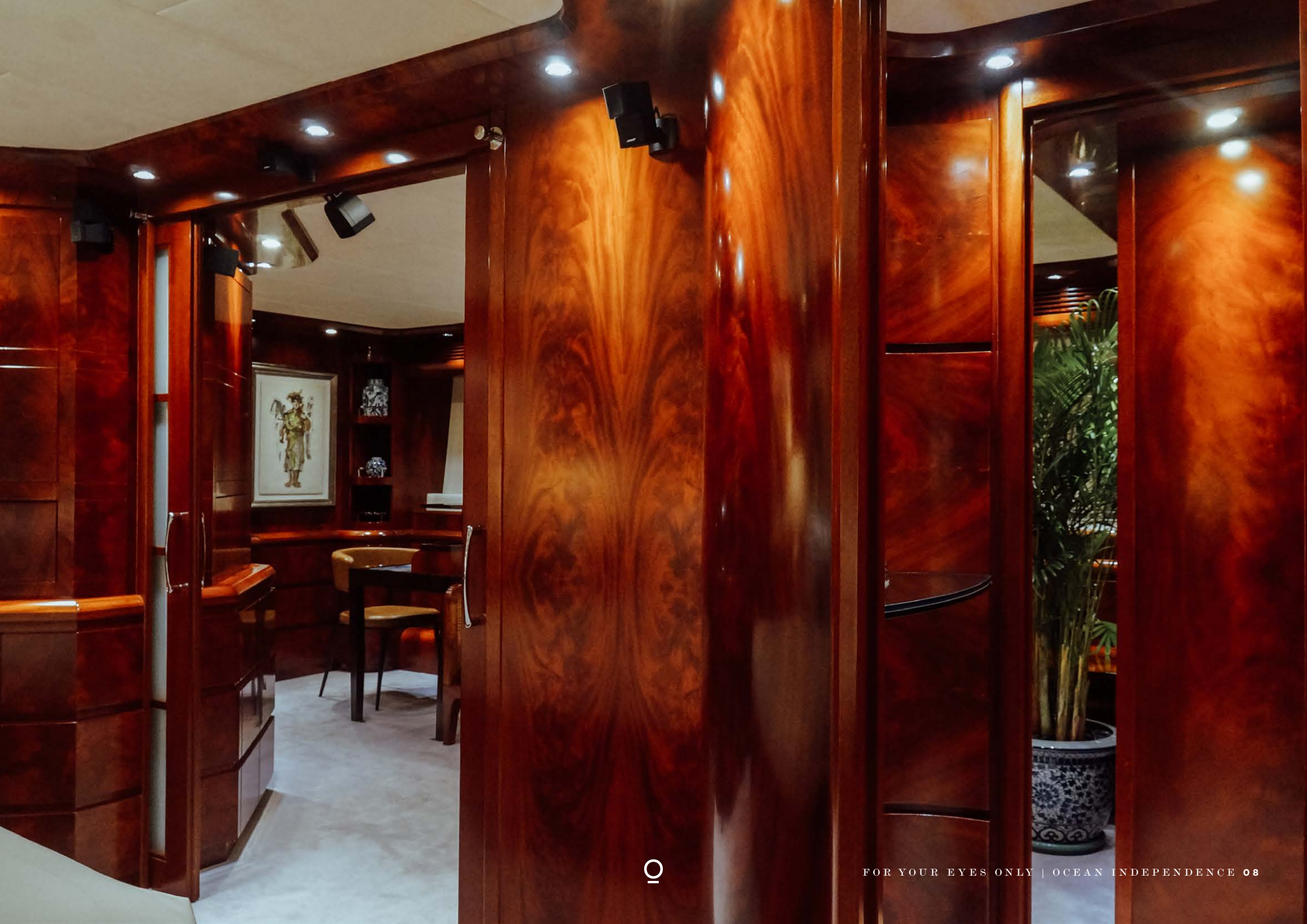






















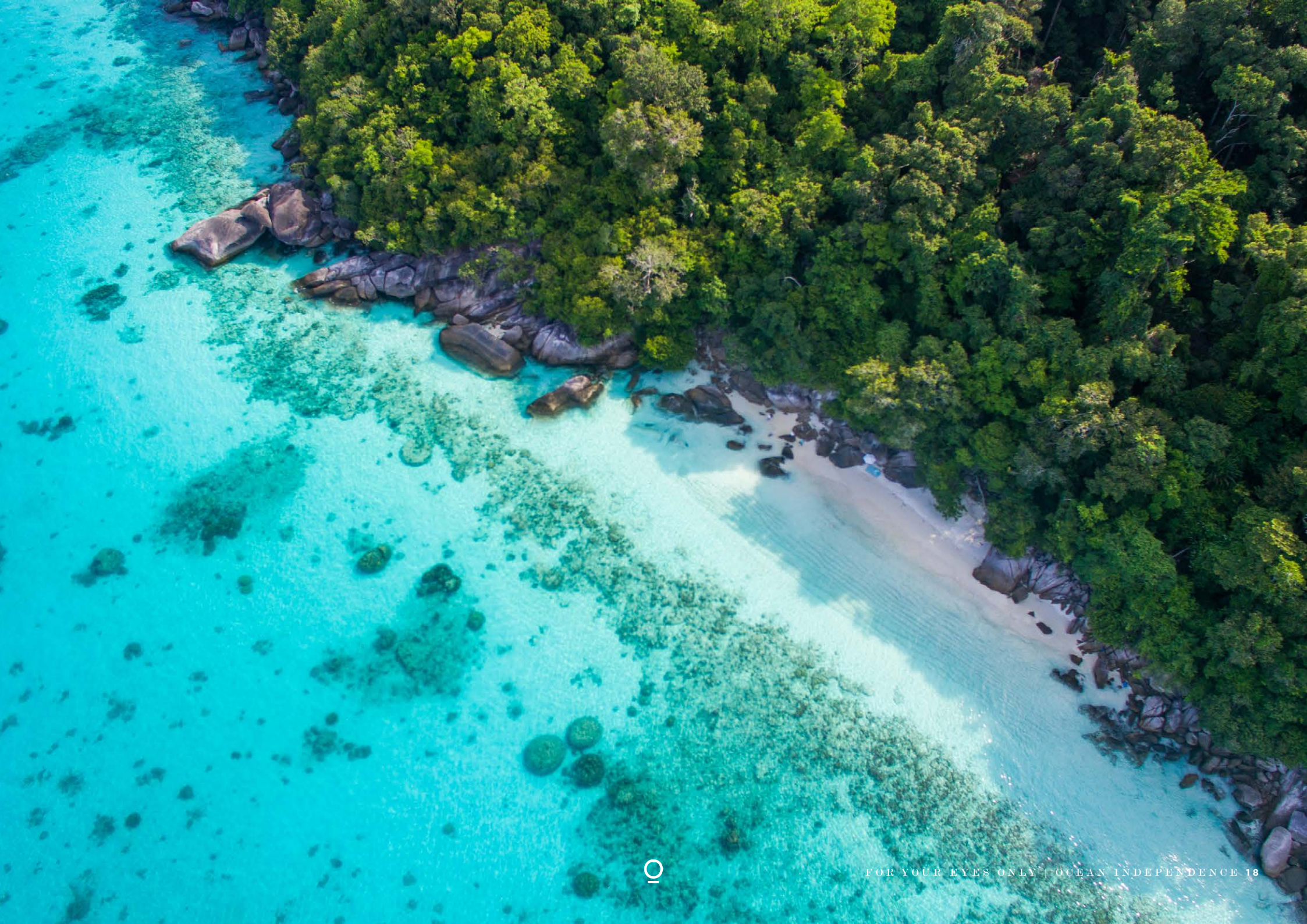






ETERNAL
CHANEL
NOW LIVING CO.

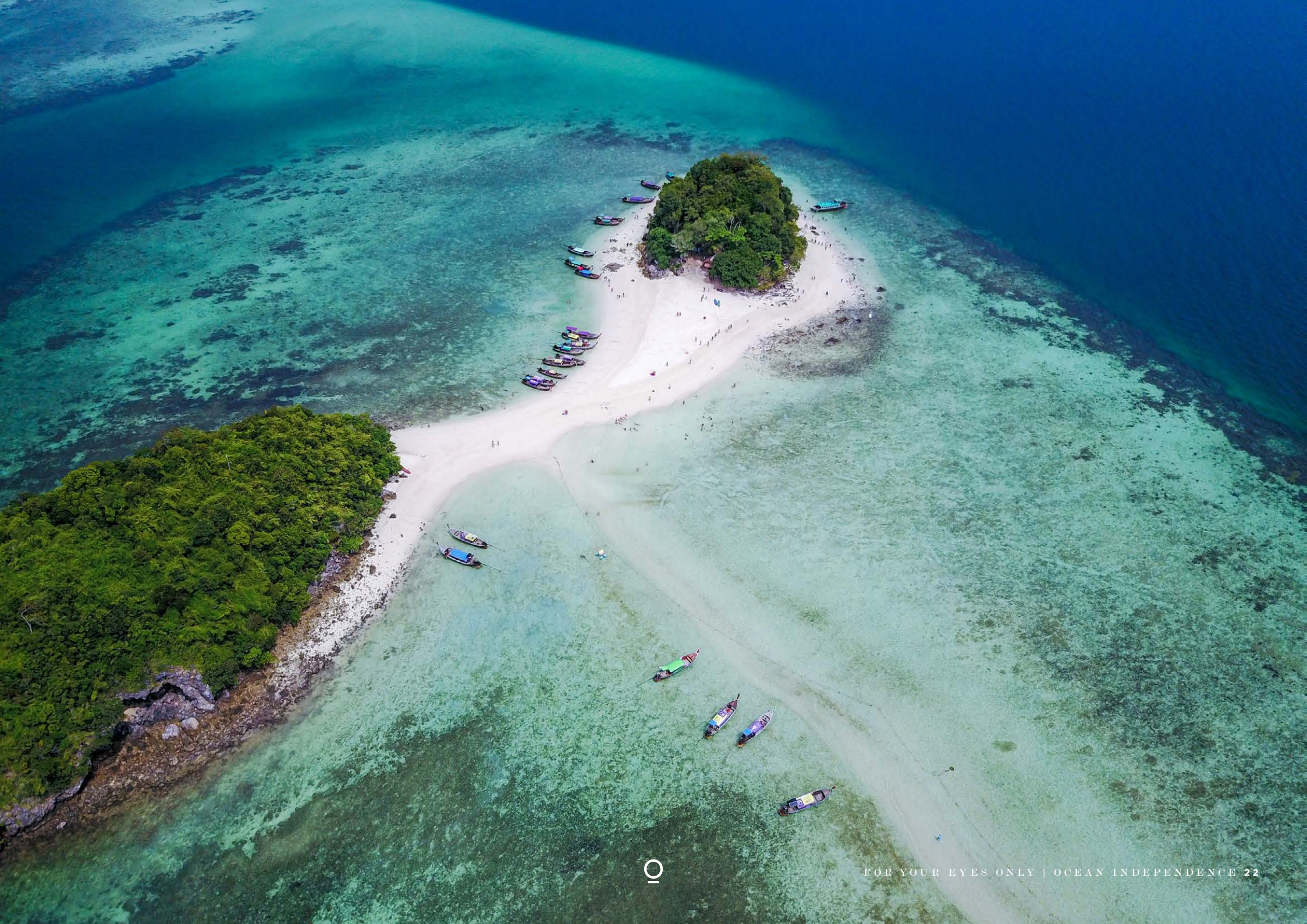




















OCEAN

INDEPENDENCE



ZÜRICH | ATHENS | AUCKLAND | DÜSSELDORF | FORT LAUDERDALE | FRENCH RIVIERA
HAMBURG | HONG KONG | LONDON | MONACO | MUMBAI | PALMA | SUSSEX

[OCEANINDEPENDENCE.COM](https://oceanindependence.com)

Disclaimer: All the particulars of this charter vessel are correct at the time of writing and given in good faith but cannot be guaranteed. Inventory and toys lists are subject to change at short notice and do not form part of a formal charter agreement. Any interested party should confirm such details of concern to them by inspection or by requesting verification. This vessel is offered subject to price change, prior sale or withdrawal without notice.