

BIG CHANGE II



OCEAN
INDEPENDENCE

BIG CHANGE II FOR CHARTER

specifications

LENGTH 38.13M / 125'0"

BEAM 7.6M / 24'0"

DRAFT 2.3M / 7'0"

BUILDER CUSTOM

BUILT 2010

HULL CONSTRUCTION STEEL

FLAG BERMUDA

ENGINES 2 X CATERPILLAR 671HP

GENERATORS 2 X 86KW

CRUISING SPEED 10 KNOTS

MAXIMUM SPEED 13 KNOTS

FUEL CONSUMPTION (CRUISE) 260 LITRES/HR

accommodation

CRUISING / OVERNIGHT GUESTS 11 / 11

GUEST STATEROOMS 5 (4 DOUBLE, 1 TWIN)

NUMBER OF CREW 9

facilities & features

TENDERS & TOYS

WILLIAMS 5M JET TENDER 110HP (APPROX. 5 GUESTS PLUS THE DRIVER)

CREW TENDER 4M

2 X JET SKIS (1 NEW IN 2012 & 1 NEW IN 2016, BOTH SIT-DOWN JET SKIS)

4 X PADDLE BOARDS

2 X KAYAKS

WATER SKIS - ADULT & CHILDRENS

WAKEBOARD

KNEE BOARD

SNORKEL GEAR

AN ARRAY OF INFLATABLE TOYS

CARIBBEAN / BAHAMAS

1 X INTREPID 323 CUDDY 10.5M, 2008, RE-PAINTED 2022. 2 X MERCURY VERADO 300HP, NEW 2018. WILL TAKE 12 PAX INCLUDING DRIVER.































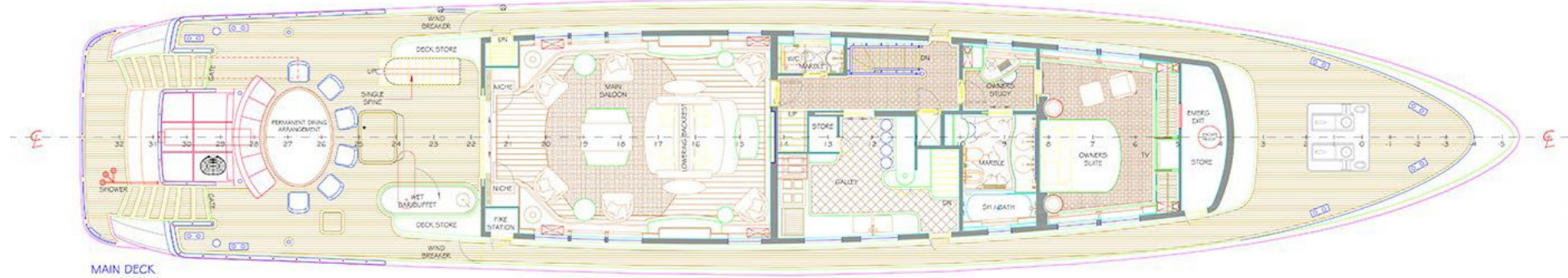
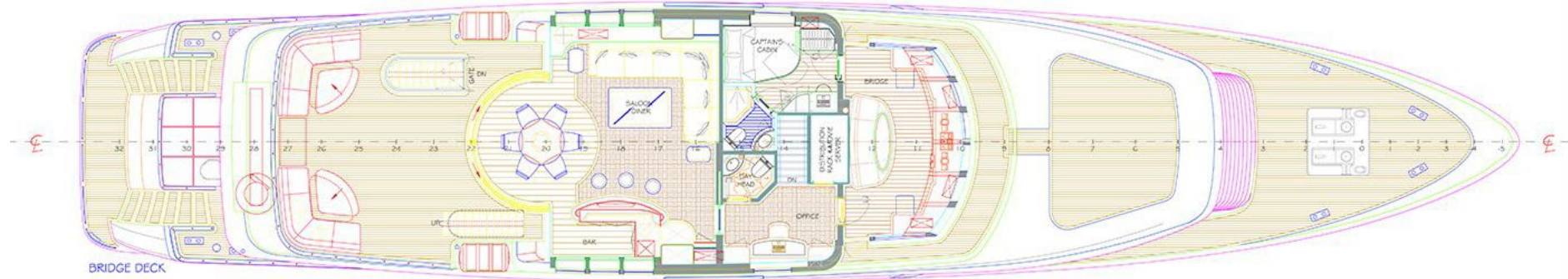
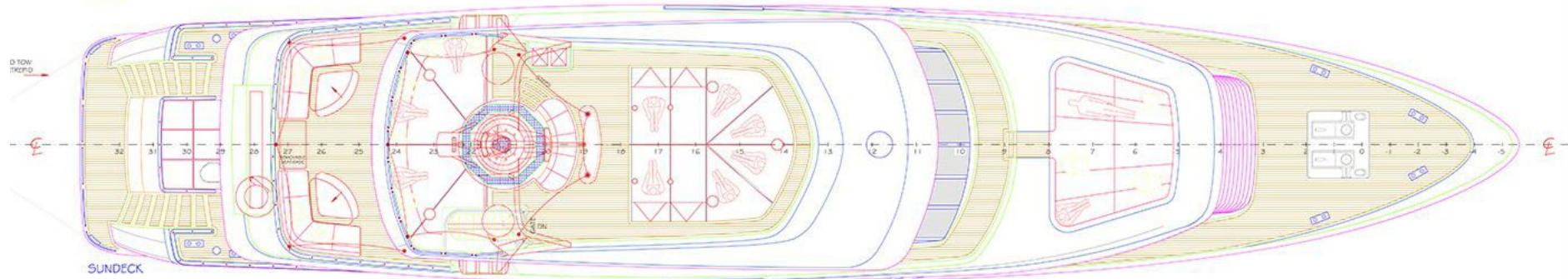








*Big
Change II*
HAMILTON



OCEAN

INDEPENDENCE



CONTACT STEPHANIE ARCHER
+44 7824 62 89 93 sarcher@ocyachts.com

ZÜRICH | ATHENS | AUCKLAND | DÜSSELDORF | FORT LAUDERDALE | FRENCH RIVIERA
HAMBURG | HONG KONG | LONDON | MONACO | MUMBAI | PALMA | SUSSEX

OCEANINDEPENDENCE.COM

Disclaimer: All the particulars of this charter vessel are correct at the time of writing and given in good faith but cannot be guaranteed. Inventory and toys lists are subject to change at short notice and do not form part of a formal charter agreement. Any interested party should confirm such details of concern to them by inspection or by requesting verification. This vessel is offered subject to price change, prior sale or withdrawal without notice.